



**NATIONAL
ENTERPRISES**



www.nationalenterprises.org



+91- 9718-38-3333



info@nationalenterprises.org

Steel cut wire shots are used in a variety of important applications where non-ferrous components like stainless steel, titanium, and aluminium are to be blasted and ferrous contamination is harmful to the component. We keep steel-cut wire shots as ready inventory at our offices. Steel-cut wire shot remains a popular alternative to cast steel abrasives. This is particularly used for peening. It is an ideal abrasive for shot peening and blasting operations.

A steel-cut wire shot represents a popular alternative to cast steel abrasives. Steel Cut Wire Shots (also called pellets) are used for cleaning, deburring, descaling, fettling, foundries, forgings, automobile components, gears and springs, heat treatment shops, non-ferrous castings, plate preparation, railway waggons and defence, earthmovers, aeronautics, steel abrication, and shot peening blasting applications where a higher level of abrasive hardness is desirable or when components to be peened or blasted have a high level of inherent hardness. Depending on the application, various hardness ranges are available. Usually, the higher the hardness, the lower the durability. The surface cleaned by wire-cut shots is exceptionally bright and smooth. It is a whole-bodied shot with no scales or oxides present. It creates no dust and leaves the surface clean and brighter than other abrasives.

CUT WIRE SHOTS

SHAPE

As Cut (-U)

DESCRIPTION

Cylindrical with Sharp Edges

SPECIFICATION

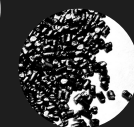
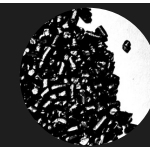
SAE J441/IS 5873 - 1970

SIZE CHART

S. NO.	Cast Shot Size (Equivalent SAE No.)	Cut Wire Designation (Inches)	Cut Wire Designation (mm)
1	S - 170	CW - 13	0.40
2	S - 200	CW - 15	0.50
3	S - 230	CW - 17	0.60
4	S - 280	CW - 20	0.70
5	S - 330	CW - 23	0.80
6	S - 360	CW - 28	1.00
7	S - 460	CW - 32	1.20

SALIENT FEATURES

- * Surface Cleaning
- * Descaling
- * Deburring
- * De-flashing
- * Shot Peening on Components like
- * Iron and Steel.



CORPORATE OFFICE:

12/2 Main Road, Opp. Lumax Automotive Systems Ltd.,Nr. Sec-37 Modh,
Faridabad-121003, Haryana, India.

MANUFACTURING UNIT:

Plot No. 2, Gali No. 1, Khasra No. 7, Behind Rajesh Dharam Kanta, Village Bajri,
Dabua Pali Road, Faridabad 121004, Haryana, India.

PUNE OFFICE:

Survey No. 24, Near Shree Tagore School, Shed No. 9, Indrayani Nagar, Bhosari
Pune Maharashtra 411026.

**BLAST ROOM ENCLOSURES, AIRLESS AND
AIR OPERATED BLASTING MACHINES,
INDUSTRIAL DUST COLLECTORS, PAINTING
EQUIPMENT AND BOOTHS, COMPLETE
RANGE OF BLAST MEDIA, ABRASIVE GRIT,
SHOT, SPARES AND CONSUMABLES-
AVAILABLE READY STOCK**